

Light  House
For Grieving Children & Families

PRESENTS...



LIGHT
HEAVY
LIGHT

AN ORIGINAL
LIVE DANCE PRODUCTION BY

JJ DANCE ARTS
by JJ Moore



In Loving

MEMORY OF

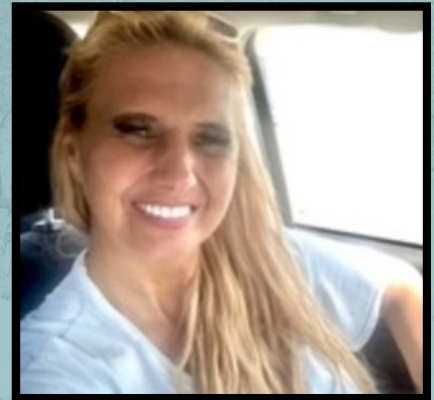
Nada Smith



Paul Iacoviello



Angel Patryluk



*The song is ended
but the melody lingers on.*

– Irving Berlin



A note from the director...



The creative process of "Light Heavy Light" was inspired by a podcast that deeply resonated with me. The message of *The RobCast's* episode #22 felt cyclical and timeless. I wanted to offer the essence of this message through dance, and that's where it all started to unfold in the spring of 2019. Connecting an annually presented show in support of a local charity, has been a desire since opening JJ Dance Arts. The Lighthouse for Grieving Children was the perfect fit to compliment and amplify both the mission of The Lighthouse and the message of the show: you are not alone...

**I've always been in awe of how
the arts allows the audience
to be seen and held
in a safe, pressure free space.**



As someone who has spent 20+ years working with kids and teens, I can affirm the powerful and positive ripple effect of allowing a young person to be seen and accepted in full. No matter what season of life they are experiencing; light or dark. A heartfelt thank you to our donors, sponsors and volunteers. To my incredibly driven, disciplined, creative students: each and every one of you fuel my spirits and inspire me more than you know. Thank you for trusting me as your mentor and coach. This show holds a special place in my heart. I hope you'll be moved in a way you didn't expect.

Sincerely,

~JJ

Act 1

“There’s lightness, heaviness & then there’s lightness..”



Narration: The RobCast episode #22

Choreographed by JJ Moore

Lead Narrator: Mackenzie Poplar

Supporting Narrators: Monika Szalek,
Gabriela Lewy & Grace Bullock

Dem Beats

Choreographed by Hollywood Jade

Remounted by JJ Moore & Emily Errington

Featuring Jason Patryluk

Tutorial by Jessica Vu

Performed by Faith Jacobs

Live Beyonce Medley

Choreographed by Nathan Espejo

You Should See Me In A Crown

Choreographed by Andrew Kyrzyk

Remounted by JJ Moore, Riley Boyes & Mackenzie Poplar

For Your Attention

Featuring Riley Boyes & Mackenzie Poplar

Choreographed by JJ Moore

Sweet Dreams

Choreographed by JJ Moore

Act 2

“Stuck singing about the pain...”



Narration: The RobCast episode #22

Choreographed by JJ Moore

Lead Narrator: Riley Boyes

Supporting Narrators: Monika Szalek,

Gabriela Lewy & Grace Bullock

Way Down We Go by Kaleo

Original Choreography by Ellie Ziemer

Remounted by Ayva Pelissier, Brielle Devin & JJ Moore

Wintersong by Sarah McLachlan

Choreographed by JJ Moore

Performed by Payton Ritchie & Grace Bullock

Dancing On My Own by Calum Scott

Choreographed by JJ Moore

When The Party's Over by Billie Eilish

Choreographed by Roberto Campanella & JJ Moore

Performed by Ellie Ivankovic & Nicholas McClung

Forward by James Blake & Beyonce

Choreographed by JJ Moore

Performed by Payton Ritchie

Praying by Kesha

Choreographed by JJ Moore

Remounted by

Featuring Ema Wills, Jason Patryluk & Jillian Mitsuko Cooper

Act 3



“It’s this wonderful, miraculous thing..”



Without You by Joseph

Choreographed by JJ Moore

Choreographic Collaboration & Performed by Nicholas McClung

Don’t Give Up On Me

Featuring Charlie Hobart

Performed by CBY Choir

Narration: The RobCast episode #22

Choreographed by JJ Moore

Lead Narrator: Ivy Rosen

Supporting Narrators: Monika Szalek,

Gabriela Lewy & Grace Bullock

Like a River Runs

Choreographed by JJ Moore & Petra Toop

Featuring Petra Toop

In dedication to The Lighthouse for Grieving Children

Free

Choreographed by JJ Moore

Remounted by Petra Toop

Dog Days

Choreographed by JJ Moore

Featuring Jason Patryluk

Remounted by Petra Toop

JJ DANCE ARTS

by JJ Moore

24/25 Program Dancers



Jason Patryluk



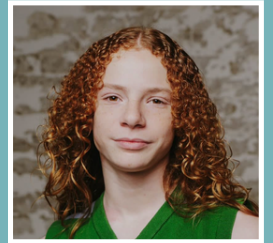
Ema Wills



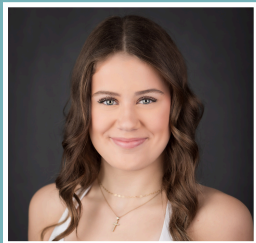
Riley Boyes



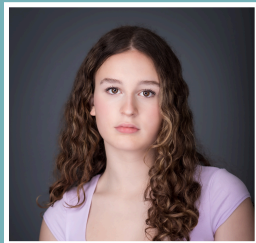
Ellie Ivankovic



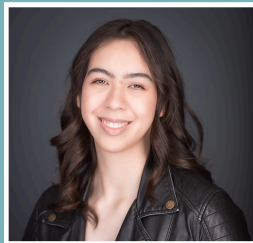
Nicholas McClung



Mackenzie Poplar



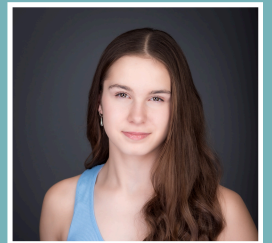
Payton Ritchie



Ivy Rosen



Monika Szalek



Grace Bullock



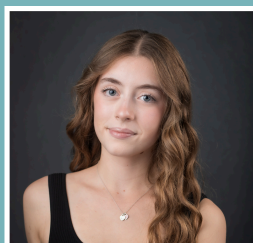
Ava Cruickshank



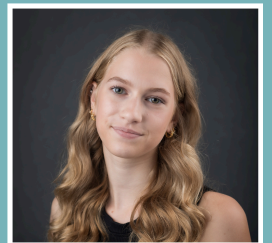
Selin Halil



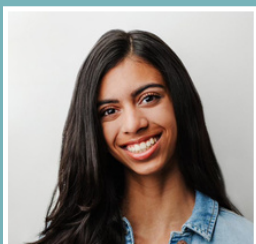
Gabriela Lewy



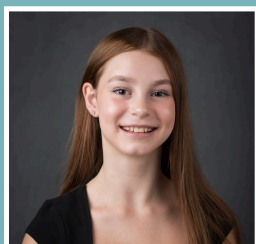
Grace Mihailovich



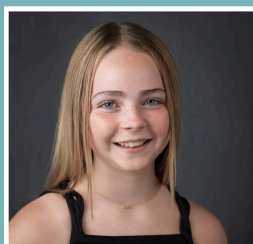
Charlotte Wills



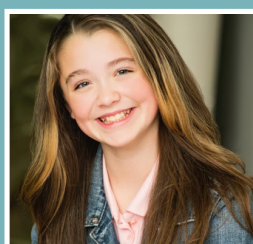
Inaya Zafar



Scarlett Bianchi



Kaylinn Brown



Caia Ing



Faith Jacobs

JJ DANCE ARTS

by JJ Moore

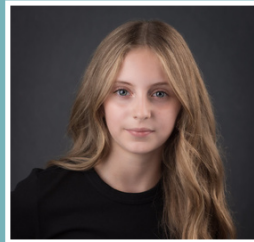
24/25 Program Dancers



Ashleigh Linse



Knox Niejadlik



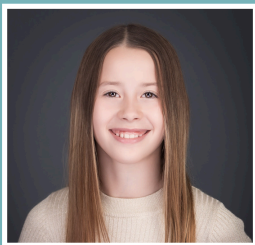
Amelia Loncaric



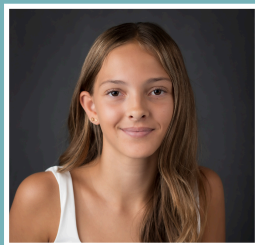
Antoinette Pedroso-Diaz



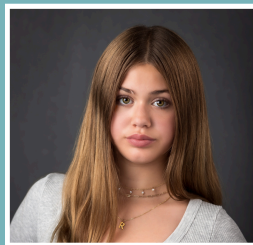
Chiara Rizzo



Gianna Rizzo



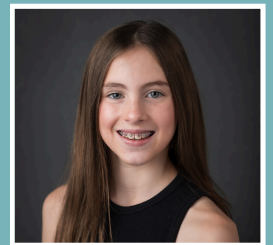
Bala Scholarchos



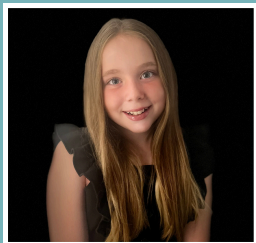
Remy Vanderlinden



Bianca Carreiro



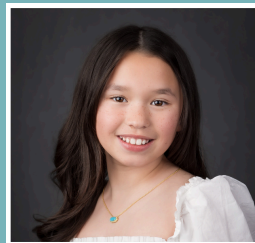
Sienna Devin



Quinn Holland



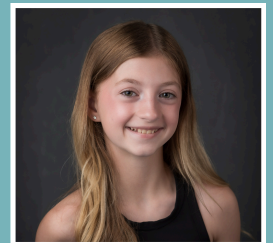
Emma Linse



Michaela Lau



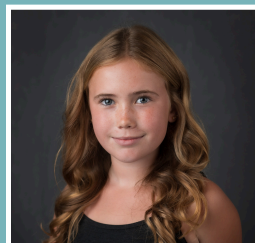
Payton MacLean



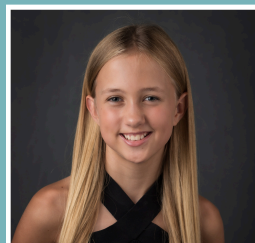
Magnolia Richardson



Yovia Scholarchos



Eloise Smith

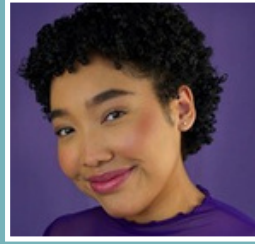


Lucy Thomson-Hill

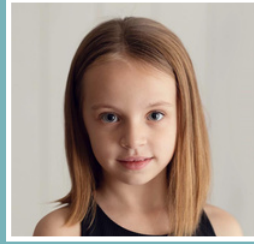


Marie Vickar

Vocalists



Jillian Mitsuko Cooper



Charlie Hobart



CBY Choir: Autumn Creet, Ava Belluz Neves, Erica Anders, Evy Raynor, Grayson Freitag, Maya Naren, Miller Flynn
Mori Freitag, Ryder Antle, Sophie MacCormack, Vanny Baikie, Vivian Sneyd, Zooney Schneider

Creative Team



Melissa JJ Moore
Artistic Director & Producer



Roberto Campanella
Choreographer



Nathan Espejo
Choreographer



Hollywood Jade
Choreographer



Andrew Kyrzyk
Choreographer



Ermanno Sbezzo
Choreographer



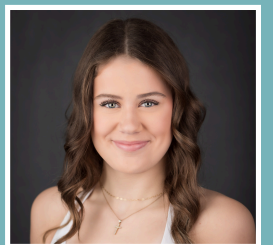
Emily Errington
Remounting Director



Ayva Pelissier
Remounting Director



Brielle Devin
Remounting Director



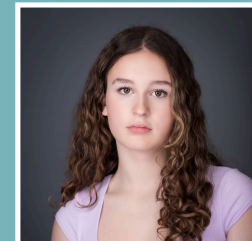
Mackenzie Poplar
Rehearsal/Remounting Director



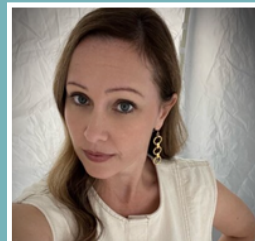
Riley Boyes
Rehearsal/Remounting Director



Jason Patryluk
Rehearsal Director



Payton Ritchie
Rehearsal Director



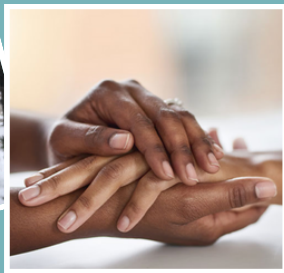
Rochelle Ing
Administrative Support & Costumes



Petra Toop
Rehearsal/Remounting Director & Administrative Support



Lighthouse for Grieving Children and Families offers free Peer to peer grief support to children and youth, ages 3-19 years, who have experienced the life-altering loss of a parent or sibling.



2022 at Lighthouse



Groups are available in person or online, and they are open-ended, so families can stay for as long as they need, to actively explore their grief in their own time.

Lighthouse does not receive government funding so we rely on the generosity of our communities to ensure our services remain free for families who need them.

Investing in the future of Lighthouse today, is an investment in the mental and emotional well-being of children and youth for years to come.



Please help us ensure no child grieves alone
www.lighthousegriefsupport.org

I WANT TO ...

LEARN MORE
ABOUT JJ
DANCE ARTS!

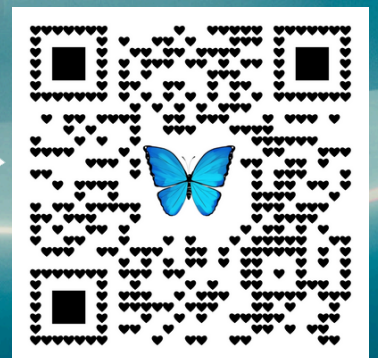
SPONSOR
"LIGHT HEAVY
LIGHT" 2025

VOLUNTEER
FOR "LIGHT
HEAVY LIGHT"
2025

AUDITION
FOR SEASON
2025/2026

EMAIL: JJ@DANCEARTS.CA

DONATIONS ARE OPEN
UNTIL JANUARY FOR
LIGHT HEAVY LIGHT 2024



PURCHASE THE CBY CHARITY SINGLE



NAME YOUR PRICE!

100% OF SALES GO TO

**LIGHT
HEAVY
LIGHT**



**CHARITY SINGLE COMING
DECEMBER 23RD**

JJ DANCE ARTS

by JJ Moore

IS EXPANDING...

Join us for SEASON 8

At Our New Location!

5230 S Service Rd. Burlington, ON

REGISTER

**Our New Recreational
Program Ages 3+**

AUDITION

**Our Pre-Professional
Program Grade 5 & up**

CHECK OUT OUR NEW WEBSITE!

**Email jj@dancearts.ca
to register for our
recreational program
or book your audition for our
pre-professional program**



JJ DANCE ARTS
by JJ Moore

&



Lighthouse
For Grieving Children & Families

Would Like to Thank Our Generous Sponsors!



THE HALIL FAMILY



JACKKNIFE

KAREN PAUL
& ASSOCIATES



EST

2009



Tessa Linden
photography



RESIDENTIAL | COMMERCIAL | INDUSTRIAL

519.767.0768

info@dallsonselectric.com



JENNIFER VAN SICKLE
TEAM



FL FOSTER LIVING
SELLING YOUR LIFESTYLE

THE HALIL FAMILY

Dervish's mother lost both of her parents by the time she was 9 years old resulting in the 6 siblings ranging from 5 to 14 years old, to cope with minimal support. Families should have a coping mechanism for grieving and the Lighthouse provides this pillar



Capture life

TESSA HINDEN PHOTOGRAPHY

est 2009

BURLINGTON'S
HEADSHOT &
PORTRAIT
SPECIALIST

AS SEEN IN

The New York Times
THE GLOBE AND MAIL*

Discover the **Ultimate** **Branding** **Multi-Tool**

SINCE 1996, WE'VE
SHARPENED BRANDS —
BIG AND SMALL.
**CALL US FOR A
FREE BRAND AUDIT***
416.451.7962



1 JACKKNIFE

JACKKNIFEDESIGN.COM

**Terms and conditions apply*





KAREN PAUL
& ASSOCIATES



***Hamilton,
Burlington,
Haldimand
area 6 month
stats are in!***



NO. 35
UNIT SALES*

FL FOSTER LIVING
SELLING YOUR LIFESTYLE

RE/MAX ESCARPMENT
REALTY INC., BROKERAGE

TOP 100

208 OTTAWA ST N, Hamilton

DIRECT: 905 807 3348

*Based on closed transactions in the Hamilton, Burlington, Haldimand Regions, January 1 - June 30, 2024.
Source: data compiled by RE/MAX Escarpment.

LYNSEY FOSTER, BROKER INFO@FOSTERLIVING.CA WWW.FOSTERLIVING.CA



A Heartfelt Thank You to All of Our Donors...



AIROUTE CARGO TORONTO
ALMEIDA HOUSEHOLD
BROWN HOUSEHOLD
DALLSON'S ELECTRIC LTD.
DRISCOLL HOUSEHOLD
FERGUSON HOUSEHOLD
FOREVER KIND JEWELRY
FOSTER LIVING
GUNN BULLOCK HOUSEHOLD
GLADIUS PROPERTY DEFENDER INC.
HALIL HOUSEHOLD
HARRISON HOUSEHOLD
ING HOUSEHOLD
JACKNIFE INC.
JENNIFER VAN SICKLE TEAM
KAREN PAUL & ASSOCIATES
LEWY HOUSEHOLD
MIDGLEY HOUSEHOLD
MOORE HOUSEHOLD
RACANELLI HOUSEHOLD
SILVA HOUSEHOLD
SLACHTA HOUSEHOLD
LEE SMITH
DANIEL SMITH
RUTH ANN SMITH
TESSA LINDEN PHOTOGRAPHY
UP REHAB
VECILE HOUSEHOLD
VICKNESHWARAN HOUSEHOLD
VIDIMLIC HOUSEHOLD